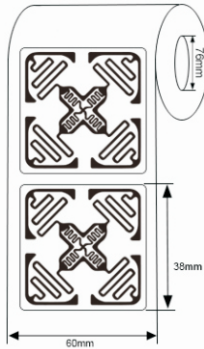
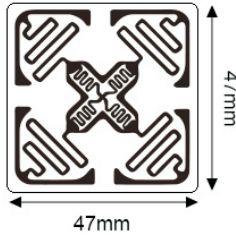


## RFID LABELS



### Model:INNO-LBIPJ-M4QT

#### ►... Profile

This is wet inlay/label with 44\*44mm antenna, with Impinj Monza 4QT (Monza M4E) chip, It is designed to read Omni-directionally, Normally, UHF tags and labels are linear polarity and read in a certain direction. Instead, this label can be read in all directions. It is mainly used for tracking management of airline baggage tags, etc.

#### ►... Key Features:

- Square antenna design.
- Worldwide operation in all RFID UHF bands (860-960 MHz).
- ISO/IEC 18000-6C compliance.
- EPC memory programmable
- Customization available with paper label
- Read Omni-directionally

#### ►... Specification:

<b>Tag Type:</b>	RFID Labels
<b>Chip:</b>	Impinj Monza 4QT (Monza M4E)
<b>Memory:</b>	EPC 96bits, TID 512bits, User 96bits
<b>Material:</b>	Printable paper, PET, PP
<b>Color:</b>	White, CMYK color available
<b>Antenna dimension:</b>	44*44mm
<b>Label dimension:</b>	47*47mm
<b>Protocol:</b>	EPC Class1 Gen2, ISO18000-6C
<b>Operating Frequency:</b>	860-960Mhz
<b>Read Range:</b>	5-15M (may change based different readers and environment)
<b>Adhesive:</b>	Permanent adhesive

<b>Mounting Methods:</b>	Self-Adhesive
<b>Data storage:</b>	up to 10 years
<b>Re-write:</b>	100,000 times
<b>Warranty:</b>	1 year
<b>Operating Temp:</b>	-40°C~+85°C
<b>Weight:</b>	0.02g
<b>Core Inner Diameter:</b>	76mm
<b>Packing Detail:</b>	2500pcs/Reel
<b>Printers supported:</b>	ZEBRA: ZT400 Series, ZT600 Series, ZD500R, ZE500R, etc. SATO: CT4-LX Series, CL4NX, CL4NX Plus, CL6NX Plus, S84-ex, etc
<b>Applications:</b>	Luggage management, Asset management, airline baggage management, etc.