

## RFID LABELS

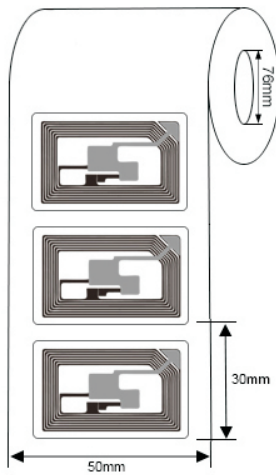
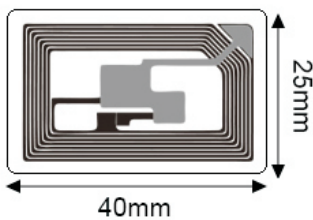
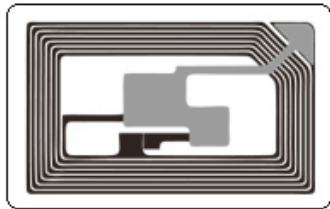
### Model:INNO-LBNXP-MF1K4025

#### ►... Profile

This is Mifare wet inlay/label with 37\*22mm antenna, It is equipped with NXP Mifare Classic 1k, an integrated circuit (IC) designed to fully comply to ISO/IEC14443-A 1-3 specification, which is ideal for application in a very short distance (typically 10 cm or less), especially for solutions of access control, all-in-one card payment applications, etc.

#### ►... Key Features:

- Rectangle antenna design.
- ISO/IEC14443-A
- Ultra slim thickness, which is very suitable for stickers applications
- Customization available with paper label/or PVC card and epoxy tags, etc.
- Access control, all-in-one card payment applications



#### ►... Specification:

<b>Tag Type:</b>	RFID Labels
<b>Chip:</b>	NXP MIFARE CLASSIC 1K
<b>Memory:</b>	1Kbytes
<b>Material:</b>	Coated paper, PET, PP
<b>Color:</b>	White, CMYK color available
<b>Antenna dimension:</b>	37*22mm
<b>Label dimension:</b>	40*25mm
<b>Protocol:</b>	ISO/IEC14443-A
<b>Operating Frequency:</b>	13.56Mhz
<b>Read Range:</b>	1-10mm (may change based different readers and environment)
<b>Adhesive:</b>	Permanent adhesive

<b>Mounting Methods:</b>	Self-Adhesive
<b>Data storage:</b>	up to 10 years
<b>Re-write:</b>	100,000 times
<b>Warranty:</b>	1 year
<b>Operating Temp:</b>	-40°C~+85°C
<b>Weight:</b>	0.02g
<b>Core Inner Diameter:</b>	76mm
<b>Packing Detail:</b>	3000pcs/roll
<b>Printers supported:</b>	ZEBRA: ZT400 Series, ZT600 Series, ZD500R, ZE500R, etc. SATO: CT4-LX Series, CL4NX, CL4NX Plus, CL6NX Plus, S84-ex, etc
<b>Applications:</b>	Ticket, Mobile payment management, etc.