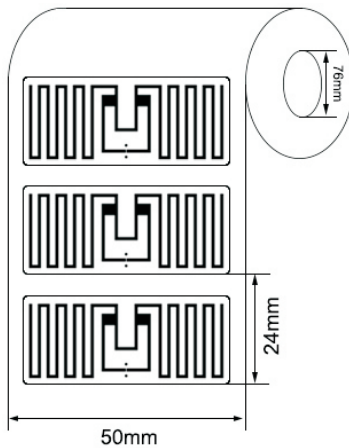
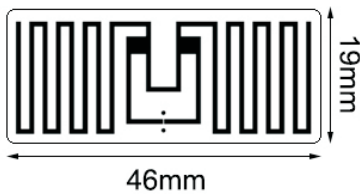
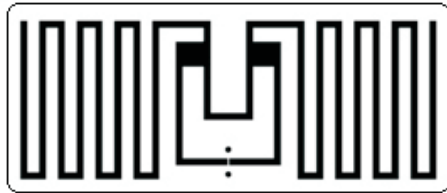


RFID LABELS



►... Specification:

Tag Type:	RFID Labels
Chip:	Impinj M750
Memory:	96-bit EPC memory, 32-bit user memory.
Material:	Printable paper, PET, PP
Color:	White, CMYK color available
Antenna dimension:	42*16mm
Label dimension:	46*19mm
Protocol:	EPC Class1 Gen2, ISO18000-6C
Operating Frequency:	860-960Mhz
Read Range:	5-15M (may change based different readers and environment)
Adhesive:	Permanent adhesive

Model:INNO-LBIPJ-M750

►... Profile

This is wet inlay/label with 42*16mm antenna, which is optimized for next generation of high memory and high performance. The Impinj family of tag chips delivers high performance, flexible memory options, and extended features to RAIN RFID tags. It can be attached to or embedded in nearly any item, globally to enable solutions for high-speed inventory counting, loss prevention with frictionless self-checkout, and embedded tagging with seamless product returns.

►... Key Features:

- Narrow antenna design.
- Worldwide operation in all RFID UHF bands (860-960 MHz).
- ISO/IEC 18000-6C compliance.
- EPC memory programmable
- Customization available with paper label
- Batch reading

Mounting Methods:	Self-Adhesive
Data storage:	up to 10 years
Re-write:	100,000 times
Warranty:	1 year
Operating Temp:	-40°C~+85°C
Weight:	0.02g
Core Inner Diameter:	76mm
Packing Detail:	2500pcs/Reel
Printers supported:	ZEBRA: ZT400 Series, ZT600 Series, ZD500R, ZE500R, etc. SATO: CT4-LX Series, CL4NX, CL4NX Plus, CL6NX Plus, S84-ex,etc
Applications:	Apparel hangtag, Foot wear management, Asset management tracking, etc.