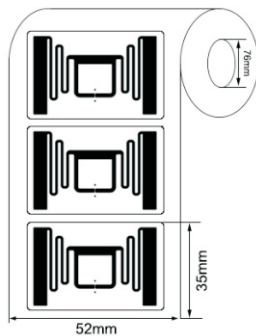
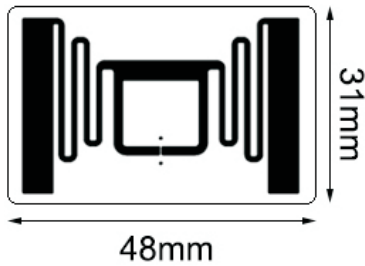
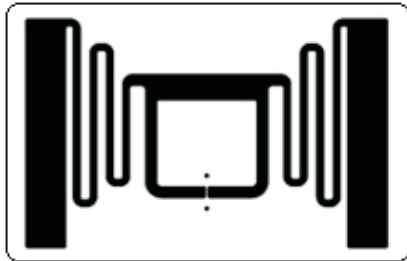


RFID LABELS



Model:INNO-LBIPJ-M700

►... Profile

This is wet inlay/label with 44*28mm antenna, which is optimized for next generation of high memory and high performance. The Impinj family of tag chips delivers high performance, flexible memory options, and extended features to RAIN RFID tags. It can be produced as windshield RFID tags to identify vehicles/cars. It is a useful option for vehicle manufacturing and delivery management, as well as for access control to car parking, doors opening, toll gating payment management, etc.

►... Key Features:

- Narrow antenna design.
- Worldwide operation in all RFID UHF bands (860-960 MHz).
- ISO/IEC 18000-6C compliance.
- EPC memory programmable
- Customization available with paper label
- Batch reading

►... Specification:

Tag Type:	RFID Labels
Chip:	Impinj M700
Memory:	EPC 128bits, TID 48bits, User 0bits
Material:	Printable paper, PET, PP
Color:	White, CMYK color available
Antenna dimension:	44*28mm
Label dimension:	48*31mm
Protocol:	EPC Class1 Gen2, ISO18000-6C
Operating Frequency:	860-960Mhz
Read Range:	5-15M (may change based different readers and environment)
Adhesive:	Permanent adhesive

Mounting Methods:	Self-Adhesive
Data storage:	up to 10 years
Re-write:	100,000 times
Warranty:	1 year
Operating Temp:	-40°C~+85°C
Weight:	0.02g
Core Inner Diameter:	76mm
Packing Detail:	2500pcs/Reel
Printers supported:	ZEBRA: ZT400 Series, ZT600 Series, ZD500R, ZE500R, etc. SATO: CT4-LX Series, CL4NX, CL4NX Plus, CL6NX Plus, S84-ex, etc
Applications:	Apparel hangtag, Foot wear management, Asset management tracking, etc.