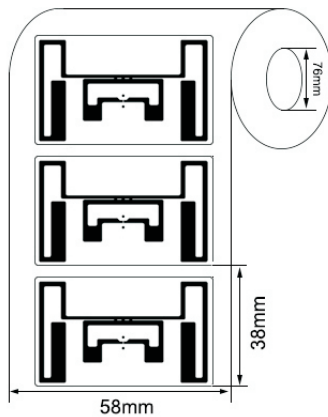
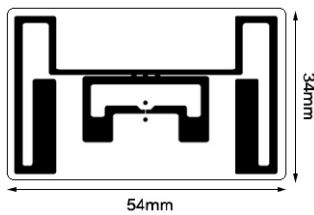
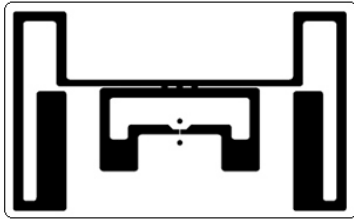


## RFID LABELS



### Model:INNO-LBNXP-U95434

#### ►... Profile

This is wet inlay/label with 50\*30mm antennas. With NXP UCODE 9 chip, it is optimized for next generation of high memory and high performance. It may be attached on the individual cases, item levels or pallets, each RFID label is serialized, which is very easy for identify and inventory or warehouse management, etc.

#### ►... Key Features:

- Narrow antenna design.
- Worldwide operation in all RFID UHF bands (860-960 MHz).
- ISO/IEC 18000-6C compliance.
- EPC memory programmable
- Customization available with paper label
- Batch reading

#### ►... Specification:

<b>Tag Type:</b>	RFID Labels
<b>Chip:</b>	NXP UCODE 9
<b>Memory:</b>	EPC 96bits, TID 48bits, User 0bits
<b>Material:</b>	Printable paper, PET, PP
<b>Color:</b>	White, CMYK color available
<b>Antenna dimension:</b>	50*30mm
<b>Label dimension:</b>	54*34mm
<b>Protocol:</b>	EPC Class1 Gen2, ISO18000-6C
<b>Operating Frequency:</b>	860-960Mhz
<b>Read Range:</b>	5-15M (may change based different readers and environment)
<b>Adhesive:</b>	Permanent adhesive

<b>Mounting Methods:</b>	Self-Adhesive
<b>Data storage:</b>	up to 10 years
<b>Re-write:</b>	100,000 times
<b>Warranty:</b>	1 year
<b>Operating Temp:</b>	-40°C~+85°C
<b>Weight:</b>	0.02g
<b>Core Inner Diameter:</b>	76mm
<b>Packing Detail:</b>	2500pcs/Reel
<b>Printers supported:</b>	ZEBRA: ZT400 Series, ZT600 Series, ZD500R, ZE500R, etc. SATO: CT4-LX Series, CL4NX, CL4NX Plus, CL6NX Plus, S84-ex, etc
<b>Applications:</b>	Apparel hangtag, Foot wear management, Asset management tracking, etc.