

## RFID KEY FOBS

### Model:INNO-KEYFOB-2

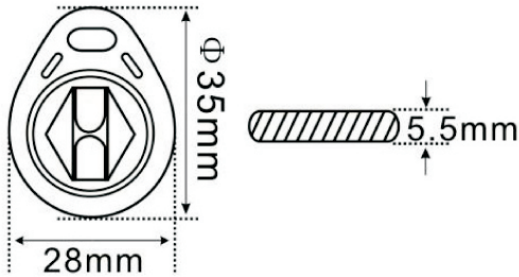


#### ►... Profile

This ABS RFID keyfob is slim designed, molded shape, customized colors; it is developed based on passive RFID Technology of LF (125Khz) and HF (13.56Mhz), which support ISO18000, ISO14443A, ISO/IEC15693 protocol. Widely used for payment, transportation and access control, etc

#### ►... Key Features:

- ABS material, Drop resistant and durable
- Price competitive with all other card technologies
- External number for easy identification and access control
- Customized shapes, sizes and pre-printed artworks available



#### ►... Specification:

Physical specification	
<b>Material</b>	ABS
<b>Size</b>	35*28MM
<b>Thickness</b>	5.5MM
<b>Color</b>	Black, Red, Orange, Blue, Customized available
<b>Available Crafts</b>	Silk-screen printing, number printing (inkjet printing or laser engraving), etc
Performance Specification	
<b>Frequency</b>	125Hhz / 13.56Mhz
<b>Available chips</b>	EM (125Khz): TK4100, EM4200, EM4305, T5577, etc. MF (13.56Mhz): Mifare S50/S70, FM11R08/ UltralightEV1/Ultralight C/Ntag213/215/216, NXP Mifare desfireEV1 2K/4K/8K, etc.)
<b>Read/Write range</b>	1-10CM

Environmental Specification	
<b>Working Temperature</b>	-20°C ~ 50°C
<b>Storage Temperature</b>	-25°C ~ 60°C
Packing details	
<b>Gross weight</b>	0.0042kgs/pcs
<b>Package</b>	100pcs/pack, 5000pcs/carton
<b>Carton size</b>	52*24.5*32cm