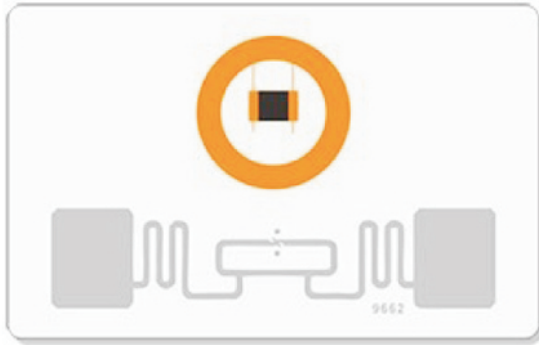


## DUAL FREQUENCY CARD (EM+UHF)

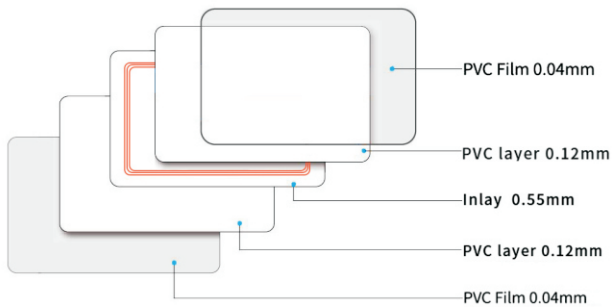


### Model:INNO-DLCARD-EU

#### ►... Profile

This dual frequency card is developed based on passive RFID Technology of EM (125Khz), and UHF (860-960Mhz), which support ISO18000 and ISO18000-6C/EPC Gen2 protocol. Widely used for payment and access control.

#### STRUCTURE



#### ►... Key Features:

- Milk white PVC material, which satisfies most people in the world.
- Printable surface for branded printers of Zebra, Datacard, Evolis, Fargo, etc.
- Price competitive with all other card technologies.
- External number for easy identification and access control.
- Customized shapes, sizes and pre-printed artworks available.

#### ►... Specification:

##### Physical specification

<b>Material</b>	PVC/PET
<b>Size</b>	85.6 *54mm (customized size available)
<b>Thickness</b>	0.86mm
<b>Color</b>	Milk white (pre-printed and transparent available)
<b>Available Crafts</b>	silk-screen, spray code, number printing (inkjet printing or laser engraving), etc.

##### Performance Specification

<b>Frequency</b>	125Khz + 860-960Mhz
<b>Available chips</b>	EM (125Khz): TK4100, EM4200, EM4305, T5577, etc. UHF (860-960MHz): Alien H3/H9, NXP U8/U9, etc.
<b>Read/Write range</b>	EM (125Khz): 1-10CM UHF (860-960Mhz): 1-15M

##### Environmental Specification

<b>Working Temperature</b>	-10 °C ~ 50 °C
<b>Storage Temperature</b>	-25 °C ~ 50 °C

##### Packing details

<b>Gross weight</b>	0.0068kgs/pcs
<b>Package</b>	100pcs/pack, 200pcs/box, 5000pcs/carton
<b>Carton size</b>	52*24.5*32cm