

## RFID KEY FOBS

### Model:INNO-KEYFOB-5

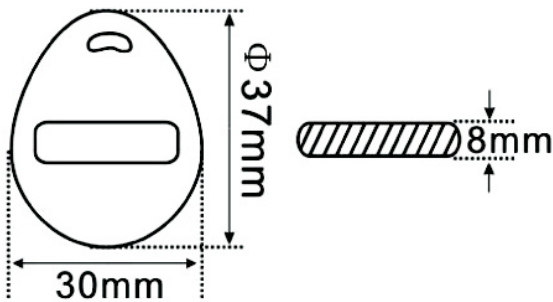


#### ►... Profile

This ABS key fob is molded shape, customized colors; it is developed based on passive RFID Technology of EM (125Khz) and MF (13.56Mhz), which support ISO18000, ISO14443A, ISO/IEC15693 protocol. Widely used for payment, transportation and access control, etc

#### ►... Key Features:

- ABS material, Drop resistant and durable
- Price competitive with all other card technologies
- External number for easy identification and access control
- Customized shapes, sizes and pre-printed artworks available



#### ►... Specification:

Physical specification	
Material	ABS
Size	37*30MM
Thickness	8mm
Color	Black, Red, Orange, Blue, Customized available
Available Crafts	Silk-screen printing, number printing (inkjet printing or laser engraving), etc
Performance Specification	
Frequency	125Hhz / 13.56Mhz
Available chips	EM (125Khz): TK4100, EM4200, EM4305, T5577, etc. MF (13.56Mhz): Mifare S50/S70, FM11R08/ UltralightEV1/Ultralight C/Ntag213/215/216, NXP Mifare desfireEV1 2K/4K/8K, etc.)
Read/Write range	1-10CM

#### Environmental Specification

Working Temperature	-20°C ~ 50°C
Storage Temperature	-25°C ~ 50°C

#### Packing details

Gross weight	0.0048kgs/pcs
Package	100pcs/pack, 5000pcs/carton
Carton size	52*24.5*32cm