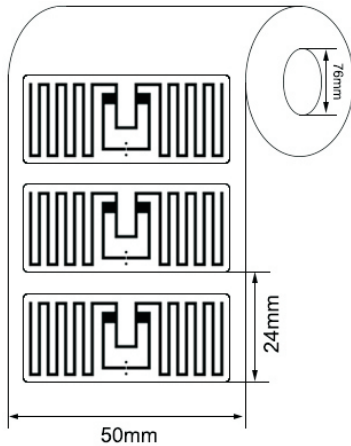
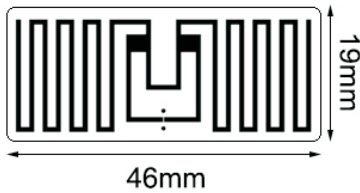
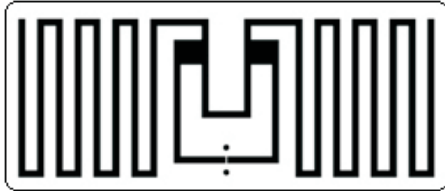


## RFID LABELS



### ►... Specification:

<b>Tag Type:</b>	RFID Labels
<b>Chip:</b>	Impinj M750
<b>Memory:</b>	96-bit EPC memory, 32-bit user memory.
<b>Material:</b>	Printable paper, PET, PP
<b>Color:</b>	White, CMYK color available
<b>Antenna dimension:</b>	42*16mm
<b>Label dimension:</b>	46*19mm
<b>Protocol:</b>	EPC Class1 Gen2, ISO18000-6C
<b>Operating Frequency:</b>	860-960Mhz
<b>Read Range:</b>	5-15M (may change based different readers and environment)
<b>Adhesive:</b>	Permanent adhesive

## Model:INNO-LBIPJ-M750

### ►... Profile

This is wet inlay/label with 42\*16mm antenna, which is optimized for next generation of high memory and high performance. The Impinj family of tag chips delivers high performance, flexible memory options, and extended features to RAIN RFID tags. It can be attached to or embedded in nearly any item, globally to enable solutions for high-speed inventory counting, loss prevention with frictionless self-checkout, and embedded tagging with seamless product returns.

### ►... Key Features:

- Narrow antenna design.
- Worldwide operation in all RFID UHF bands (860-960 MHz).
- ISO/IEC 18000-6C compliance.
- EPC memory programmable
- Customization available with paper label
- Batch reading

<b>Mounting Methods:</b>	Self-Adhesive
<b>Data storage:</b>	up to 10 years
<b>Re-write:</b>	100,000 times
<b>Warranty:</b>	1 year
<b>Operating Temp:</b>	-40°C~+85°C
<b>Weight:</b>	0.02g
<b>Core Inner Diameter:</b>	76mm
<b>Packing Detail:</b>	2500pcs/Reel
<b>Printers supported:</b>	ZEBRA: ZT400 Series, ZT600 Series, ZD500R, ZE500R, etc. SATO: CT4-LX Series, CL4NX, CL4NX Plus, CL6NX Plus, S84-ex, etc
<b>Applications:</b>	Apparel hangtag, Foot wear management, Asset management tracking, etc.