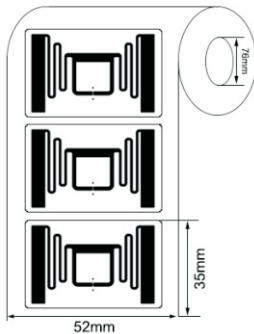
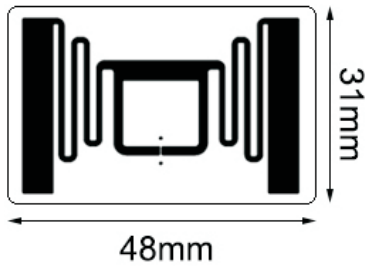
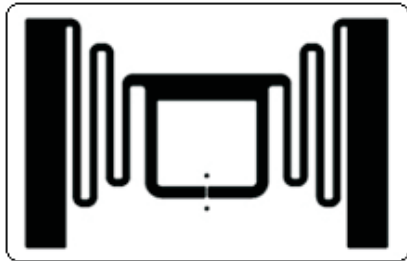


## RFID LABELS



### Model:INNO-LBIPJ-M700

#### ►... Profile

This is wet inlay/label with 44\*28mm antenna, which is optimized for next generation of high memory and high performance. The Impinj family of tag chips delivers high performance, flexible memory options, and extended features to RAIN RFID tags. It can be produced as windshield RFID tags to identify vehicles/cars. It is a useful option for vehicle manufacturing and delivery management, as well as for access control to car parking, doors opening, toll gating payment management, etc.

#### ►... Key Features:

- Narrow antenna design.
- Worldwide operation in all RFID UHF bands (860-960 MHz).
- ISO/IEC 18000-6C compliance.
- EPC memory programmable
- Customization available with paper label
- Batch reading

#### ►... Specification:

<b>Tag Type:</b>	RFID Labels
<b>Chip:</b>	Impinj M700
<b>Memory:</b>	EPC 128bits, TID 48bits, User 0bits
<b>Material:</b>	Printable paper, PET, PP
<b>Color:</b>	White, CMYK color available
<b>Antenna dimension:</b>	44*28mm
<b>Label dimension:</b>	48*31mm
<b>Protocol:</b>	EPC Class1 Gen2, ISO18000-6C
<b>Operating Frequency:</b>	860-960Mhz
<b>Read Range:</b>	5-15M (may change based different readers and environment)
<b>Adhesive:</b>	Permanent adhesive

<b>Mounting Methods:</b>	Self-Adhesive
<b>Data storage:</b>	up to 10 years
<b>Re-write:</b>	100,000 times
<b>Warranty:</b>	1 year
<b>Operating Temp:</b>	-40°C~+85°C
<b>Weight:</b>	0.02g
<b>Core Inner Diameter:</b>	76mm
<b>Packing Detail:</b>	2500pcs/Reel
<b>Printers supported:</b>	ZEBRA: ZT400 Series, ZT600 Series, ZD500R, ZE500R, etc. SATO: CT4-LX Series, CL4NX, CL4NX Plus, CL6NX Plus, S84-ex, etc
<b>Applications:</b>	Apparel hangtag, Foot wear management, Asset management tracking, etc.