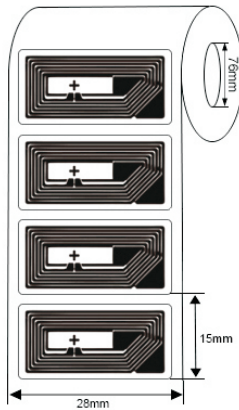
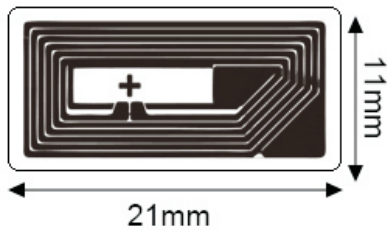
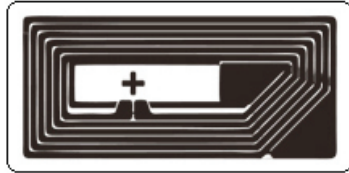


## RFID LABELS



### Model:INNO-LBNFC-NTG2111

#### ►... Profile

This is NFC wet inlay/label with 18\*08mm antenna, The NFC Wet Inlay provides superior reliability in a number of RFID tagging applications that require close range (near field) communication. With a compact form factor and 144 bytes of user memory, ideal solution for retail, print media, and miscellaneous applications, etc.

#### ►... Key Features:

- Rectangle antenna design.
- ISO/IEC14443-A
- NFC near field communication
- Customization available with paper label

#### ►... Specification:

|                             |   |
|-----------------------------|---|
| <b>Tag Type:</b>            | RFID Labels   |
| <b>Chip:</b>                | NXP NTAG 213  |
| <b>Memory:</b>              | 180 bytes   |
| <b>Material:</b>            | Coated paper, PET, PP                                       |
| <b>Color:</b>               | White, CMYK color available                                 |
| <b>Antenna dimension:</b>   | 18*08mm   |
| <b>Label dimension:</b>     | 21*11mm   |
| <b>Protocol:</b>            | ISO/IEC14443-A  |
| <b>Operating Frequency:</b> | 13.56Mhz  |
| <b>Read Range:</b>          | 1-10mm (may change based different readers and environment) |
| <b>Adhesive:</b>            | Permanent adhesive  |

|                             |  |
|-----------------------------|--|
| <b>Mounting Methods:</b>    | Self-Adhesive  |
| <b>Data storage:</b>        | up to 10 years   |
| <b>Re-write:</b>            | 100,000 times  |
| <b>Warranty:</b>            | 1 year   |
| <b>Operating Temp:</b>      | -40°C~+85°C  |
| <b>Weight:</b>              | 0.02g  |
| <b>Core Inner Diameter:</b> | 76mm   |
| <b>Packing Detail:</b>      | 3000pcs/roll   |
| <b>Printers supported:</b>  | ZEBRA: ZT400 Series, ZT600 Series, ZD500R, ZE500R, etc.<br>SATO: CT4-LX Series, CL4NX, CL4NX Plus, CL6NX Plus, S84-ex, etc |
| <b>Applications:</b>        | Ticket, Mobile payment management, etc.  |