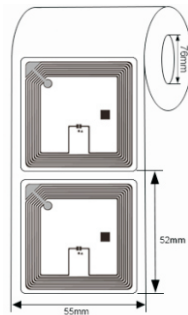
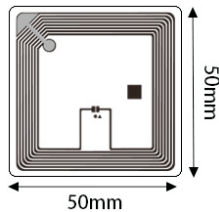
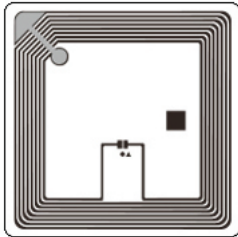


RFID LABELS



Model:INNO-LBNXP-ICD5050

►... Profile

This is HF wet inlay/label with 45*45mm antenna, featuring the NXP ICODE SLIX2 IC chip, which equipped with 2,528 bits of extended user memory and provides excellent performance in all printed media products and applications, including self-check with stack reading capability, library management and EAS, etc.

►... Key Features:

- Square antenna design.
- ISO/IEC15693
- Very slim thickness suitable for sticker application
- Customization available with paper label

►... Specification:

Tag Type:	RFID Labels
Chip:	NXP ICODE SLIX, NXP ICODE SLIX2
Memory:	User 1024/2560 bits
Material:	Coated paper, PET, PP
Color:	White, CMYK color available
Antenna dimension:	45*45mm
Label dimension:	50*50mm
Protocol:	ISO/IEC15693
Operating Frequency:	13.56Mhz
Read Range:	1-10mm (may change based different readers and environment)
Adhesive:	Permanent adhesive

Mounting Methods:	Self-Adhesive
Data storage:	up to 10 years
Re-write:	100,000 times
Warranty:	1 year
Operating Temp:	-40°C~+85°C
Weight:	0.02g
Core Inner Diameter:	76mm
Packing Detail:	2000pcs/roll
Printers supported:	ZEBRA: ZT400 Series, ZT600 Series, ZD500R, ZE500R, etc. SATO: CT4-LX Series, CL4NX, CL4NX Plus, CL6NX Plus, S84-ex, etc
Applications:	library management and EAS, etc.