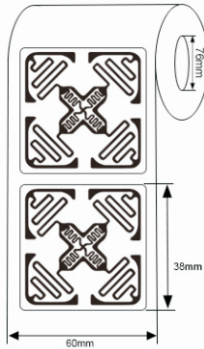
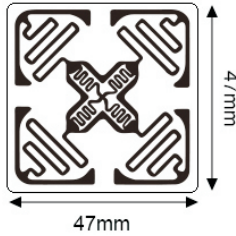


RFID LABELS



Model:INNO-LBIPJ-M4QT

►... Profile

This is wet inlay/label with 44*44mm antenna, with Impinj Monza 4QT (Monza M4E) chip, It is designed to read Omni-directionally, Normally, UHF tags and labels are linear polarity and read in a certain direction. Instead, this label can be read in all directions. It is mainly used for tracking management of airline baggage tags, etc.

►... Key Features:

- Square antenna design.
- Worldwide operation in all RFID UHF bands (860-960 MHz).
- ISO/IEC 18000-6C compliance.
- EPC memory programmable
- Customization available with paper label
- Read Omni-directionally

►... Specification:

Tag Type:	RFID Labels
Chip:	Impinj Monza 4QT (Monza M4E)
Memory:	EPC 96bits, TID 512bits, User 96bits
Material:	Printable paper, PET, PP
Color:	White, CMYK color available
Antenna dimension:	44*44mm
Label dimension:	47*47mm
Protocol:	EPC Class1 Gen2, ISO18000-6C
Operating Frequency:	860-960Mhz
Read Range:	5-15M (may change based different readers and environment)
Adhesive:	Permanent adhesive

Mounting Methods:	Self-Adhesive
Data storage:	up to 10 years
Re-write:	100,000 times
Warranty:	1 year
Operating Temp:	-40°C~+85°C
Weight:	0.02g
Core Inner Diameter:	76mm
Packing Detail:	2500pcs/Reel
Printers supported:	ZEBRA: ZT400 Series, ZT600 Series, ZD500R, ZE500R, etc. SATO: CT4-LX Series, CL4NX, CL4NX Plus, CL6NX Plus, S84-ex, etc
Applications:	Luggage management, Asset management, airline baggage management, etc.