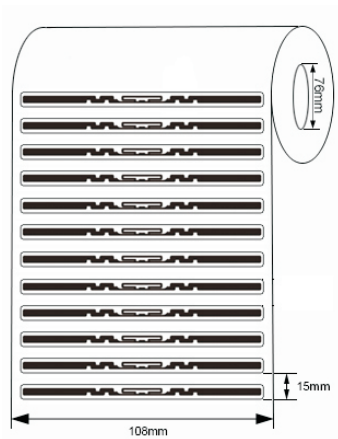
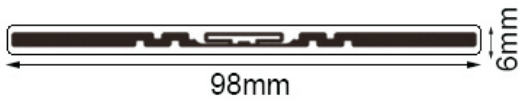


RFID LABELS



Model:INNO-LBIPJ-R69806

►... Profile

This is wet inlay/label with 95*03mm antenna, which is compatible with Impinj Monza R6 and Monza R6-P at the same time, Impinj Monza R6 IC comes with 96 bit EPC memory and a 48-bit unique serialized TID Number, while Impinj Monza R6-P is available with several EPC and user memory options. In addition, the Monza R6-P based inlays provide additional features including kill and access password protection to ensure user privacy. Which is widely used for supply chain, asset tracking, and logistic, etc.

►... Key Features:

- Narrow antenna design.
- Worldwide operation in all RFID UHF bands (860-960 MHz).
- ISO/IEC 18000-6C compliance.
- EPC memory programmable
- Customization available with paper label
- Batch reading

►... Specification:

Tag Type:	RFID Labels
Chip:	Impinj Monza R6 or Monza R6-P
Memory:	EPC 96bits/128bits, TID 48bits, User 0bits/32bits
Material:	Printable paper, PET, PP
Color:	White, CMYK color available
Antenna dimension:	95*03mm
Label dimension:	98*06mm
Protocol:	EPC Class1 Gen2, ISO18000-6C
Operating Frequency:	860-960Mhz
Read Range:	5-15M (may change based different readers and environment)
Adhesive:	Permanent adhesive

Mounting Methods:	Self-Adhesive
Data storage:	up to 10 years
Re-write:	100,000 times
Warranty:	1 year
Operating Temp:	-40°C~+85°C
Weight:	0.02g
Core Inner Diameter:	76mm
Packing Detail:	2500pcs/Reel
Printers supported:	ZEBRA: ZT400 Series, ZT600 Series, ZD500R, ZE500R, etc. SATO: CT4-LX Series, CL4NX, CL4NX Plus, CL6NX Plus, S84-ex, etc
Applications:	Apparel hangtag, Foot wear management, Asset management tracking, etc.