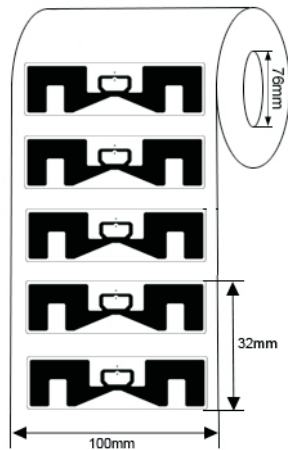
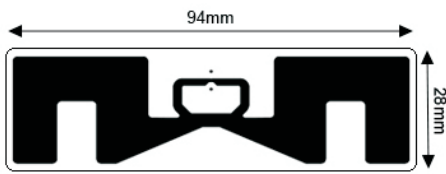


## RFID LABELS



### Model:INNO-LBIPJ-R69428

#### ►... Profile

This is wet inlay/label with 90\*24mm antenna, which is compatible with Impinj Monza R6 and Monza R6-P at the same time, Impinj Monza R6 IC comes with 96 bit EPC memory and a 48-bit unique serialized TID Number, while Impinj Monza R6-P is available with several EPC and user memory options. In addition, the Monza R6-P based inlays provide additional features including kill and access password protection to ensure user privacy. Which is widely used for supply chain, asset tracking, and logistic, etc.

#### ►... Key Features:

- Narrow antenna design.
- Worldwide operation in all RFID UHF bands (860-960 MHz).
- ISO/IEC 18000-6C compliance.
- EPC memory programmable
- Customization available with paper label
- Batch reading

#### ►... Specification:

<b>Tag Type:</b>	RFID Labels
<b>Chip:</b>	Impinj Monza R6 or Monza R6-P
<b>Memory:</b>	EPC 96bits/128bits, TID 48bits, User 0bits
<b>Material:</b>	Printable paper, PET, PP
<b>Color:</b>	White, CMYK color available
<b>Antenna dimension:</b>	90*24mm
<b>Label dimension:</b>	94*28mm
<b>Protocol:</b>	EPC Class1 Gen2, ISO18000-6C
<b>Operating Frequency:</b>	860-960Mhz
<b>Read Range:</b>	5-15M (may change based different readers and environment)
<b>Adhesive:</b>	Permanent adhesive

<b>Mounting Methods:</b>	Self-Adhesive
<b>Data storage:</b>	up to 10 years
<b>Re-write:</b>	100,000 times
<b>Warranty:</b>	1 year
<b>Operating Temp:</b>	-40°C~+85°C
<b>Weight:</b>	0.02g
<b>Core Inner Diameter:</b>	76mm
<b>Packing Detail:</b>	2500pcs/Reel
<b>Printers supported:</b>	ZEBRA: ZT400 Series, ZT600 Series, ZD500R, ZE500R, etc. SATO: CT4-LX Series, CL4NX, CL4NX Plus, CL6NX Plus, S84-ex, etc
<b>Applications:</b>	Apparel hangtag, Foot wear management, Asset management tracking, etc.