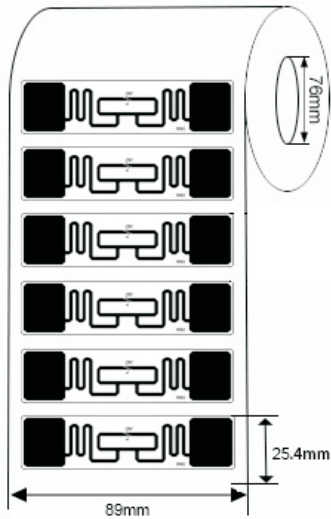
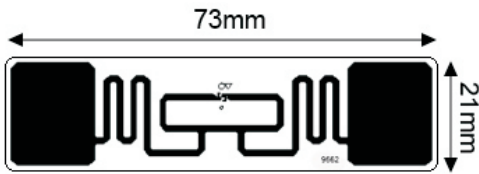
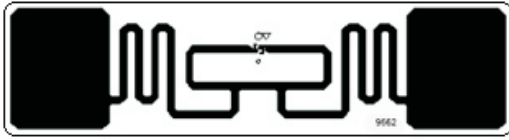


## RFID LABELS



### Model:INNO-LBALN-9662

#### ►... Profile

This is wet inlay/label with 70\*17mm antenna, which is optimized for next generation of high memory and high performance. ALN-9662 "G" inlay by Alien Technology IC based "Short" antenna design continues the legacy of providing leading performance in an inlay sized right for numerous applications. Fine tuned for windshields and high-dielectric materials, enabling class leading performance & reliability.

#### ►... Key Features:

- Narrow antenna design.
- Worldwide operation in all RFID UHF bands (860-960 MHz).
- ISO/IEC 18000-6C compliance.
- EPC memory programmable
- Customization available with paper label
- Batch reading

#### ►... Specification:

<b>Tag Type:</b>	RFID Labels
<b>Chip:</b>	Alien Higgs 3
<b>Memory:</b>	EPC 96bits, TID 64bits, User 512bits
<b>Material:</b>	Printable paper, PET, PP
<b>Color:</b>	White, CMYK color available
<b>Antenna dimension:</b>	70*17mm
<b>Label dimension:</b>	73*21mm
<b>Protocol:</b>	EPC Class1 Gen2, ISO18000-6C
<b>Operating Frequency:</b>	860-960Mhz
<b>Read Range:</b>	5-15M (may change based different readers and environment)
<b>Adhesive:</b>	Permanent adhesive

<b>Mounting Methods:</b>	Self-Adhesive
<b>Data storage:</b>	up to 10 years
<b>Re-write:</b>	100,000 times
<b>Warranty:</b>	1 year
<b>Operating Temp:</b>	-40°C~+85°C
<b>Weight:</b>	0.02g
<b>Core Inner Diameter:</b>	76mm
<b>Packing Detail:</b>	2500pcs/Reel
<b>Printers supported:</b>	ZEBRA: ZT400 Series, ZT600 Series, ZD500R, ZE500R, etc. SATO: CT4-LX Series, CL4NX, CL4NX Plus, CL6NX Plus, S84-ex, etc
<b>Applications:</b>	Apparel hangtag, Foot wear management, Asset management tracking, etc.